



## High - Current Change - Over Disconnectors

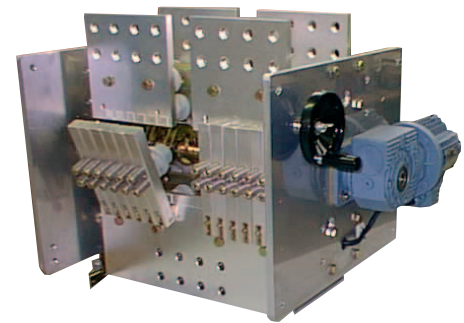
**NOR-R Range**

**1500 V DC - 4000 to 32000 A**

**Single Pole / Double Pole**

**Copper Terminals**

- Low and constant voltage drop
- Very compact design
- High short - circuit current withstand
- Large insulation and creepage distances
- Easy connections to Copper busbars by bolting
- Large customization possible with:
  - Actuators (motor, pneumatic, manual)
  - Auxiliaries (limit switches, locks, control boxes)
  - Dimensions fitting



### Main technical characteristics

#### Electrical Data

- Temperature rise at nominal current (with 40°C max. Ambient temperature) less than : 65°C
- Typical temperature rise at nominal current (with 40°C max.) : 15°C above busbars
- Typical Voltage drop at nominal current : 30 mV
- Peak short-circuit current withstand (upon circuit configuration) : 5 x (Nominal current)
- Dielectric withstand strength
  - Between live parts in open position : 10 kV - 50 Hz - 1 min
  - Between live parts and earth : 10 kV - 50 Hz - 1 min
  - Between auxiliary contacts and earth : 2.5 kV - 50 Hz - 1 min
  - Between motor and earth : 2 kV - 50 Hz - 1 min
- SCR leakage current breaking capacity (upon request) : 1 A - 100 V DC
- Power breaking capacity up to 100 kA - 100 V DC - L/R < 20 msec : Upon request

#### Mechanical Data

- Mechanical endurance (with respect to maintenance instructions). : 20 000 Cycles
- Typical duration of opening or dosing operation
  - With motor operation : 3 to 12 seconds
  - With pneumatic operation : Less than 1 second
- Ponctual temperature withstand without equipment damages. : 140°C

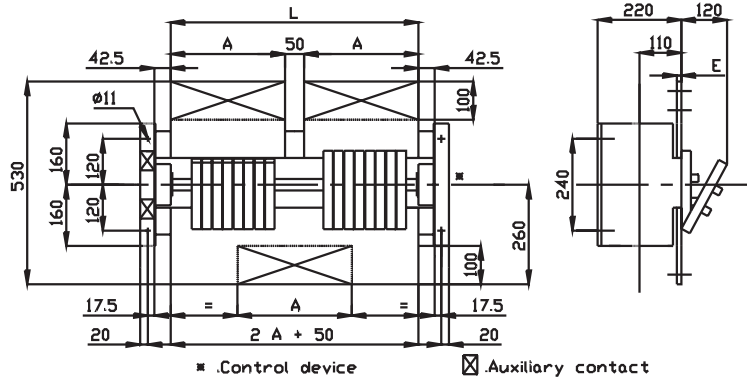
### Technology

- Visible break by direct seeing of the mobile silver-plated copper contacts
- Mechanically independant mobile contact arms with high-pressure springs
- Electrical contact with silver to silver contact
- Insulation with Fiberglass reinforced polyester insulators
- Operation mechanism by a toggle closed system
- Mechanism of bichromate galvanized steel
- Disconnectors are self-supporting - Busbars support must be sized to withstand the disonnector additional weight
- Upon request, possible association of two devices on the same drive

## Main dimensions

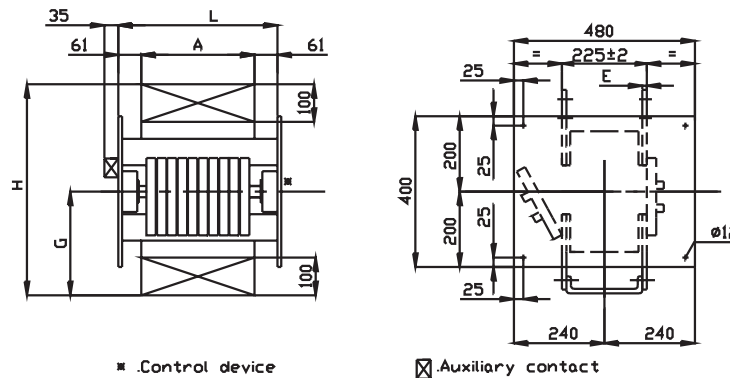
### NOR-R 4000 to 32000 A

Figure 6



Dimensions mm	Current Rating kA				
	4	6	8	10	12.5
A	150	250	300	350	400
E	15	15	15	15	15
L	435	635	735	835	935
Driving	Weight kg				
Manual Handle	45	68	95	115	140
Geared motor	48	72	100	120	145

Figure 7

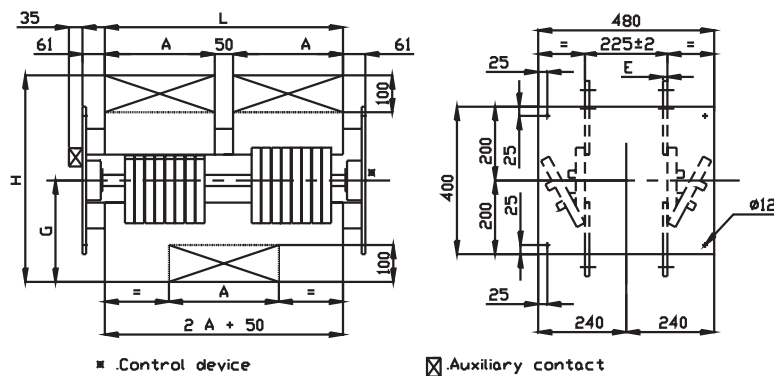


Dimensions mm	Current Rating kA					
	4	6	8	10	12.5	16
A	150	250	300	350	400	450
E	15	15	15	15	15	20
G	280	280	280	280	280	280
H	570	570	570	570	570	570
L	272	372	422	472	522	572
Driving	Weight kg					
Manual Handle	55	80	95	115	140	180
Geared motor	60	85	100	120	145	190



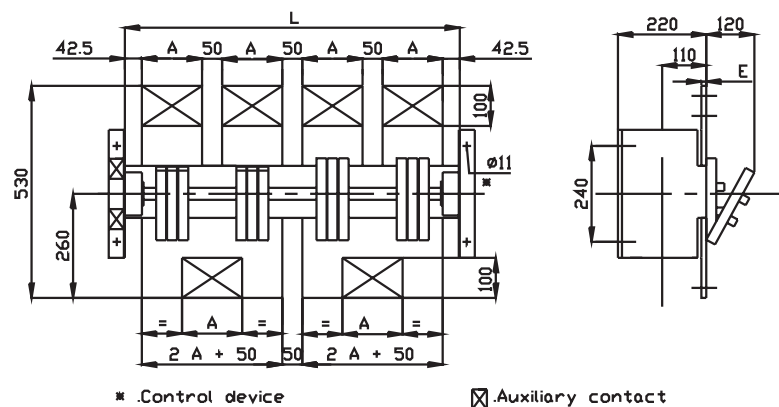
## Main dimensions NOR-R 4000 to 32000 A

Figure 8



Dimensions mm	Current Rating kA						
	8	10	12	16	20	25	32
A	150	200	250	300	350	400	450
E	15	15	15	15	15	15	20
G	280	280	280	280	280	280	280
H	570	570	570	570	570	570	570
L	472	572	672	772	872	972	1072
Driving	Weight kg						
Manual Handle	95	115	135	175	215	265	335
Geared motor	100	120	140	180	220	275	345

Figure 9

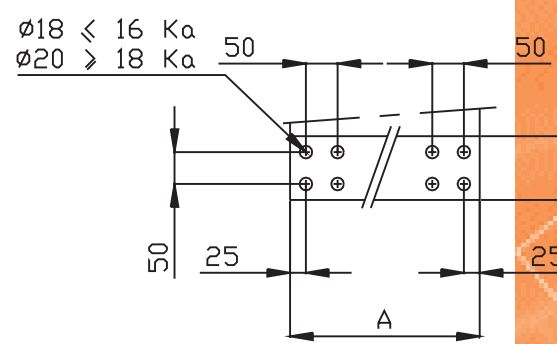
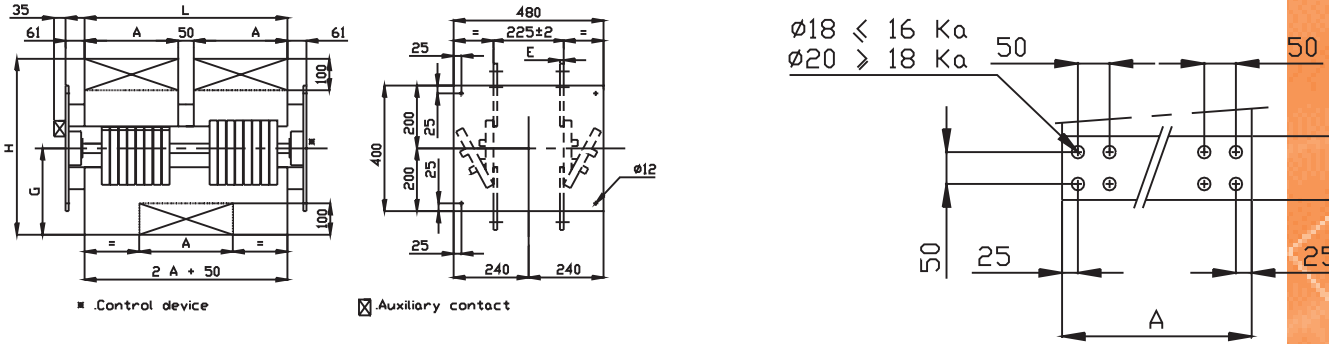


Dimensions mm	Current Rating kA	
	4	6
A	150	250
E	15	15
L	835	1235
Driving	Weight kg	
Manual Handle	85	135
Geared motor	90	140

Main dimensions

NOR-R 4000 to 32000 A

Figure 10



Dimensions mm	Current Rating kA					
	4	6	8	10	12.5	16
A	150	250	300	350	400	450
E	15	15	15	15	15	20
G	280	280	280	280	280	280
H	570	570	570	570	570	570
L	472	672	772	872	972	1072
Driving	Weight kg					
Manual Handle	95	135	175	215	265	335
Geared motor	100	140	180	220	275	345

Figure 11

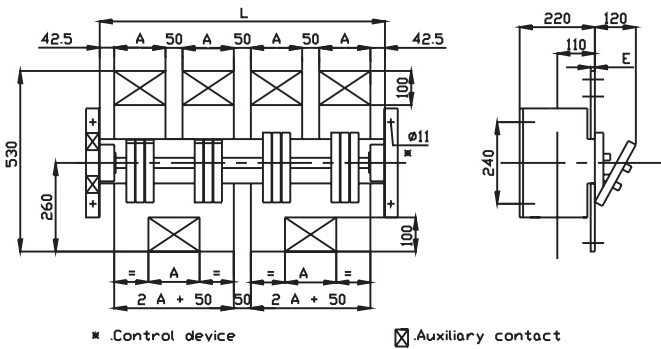
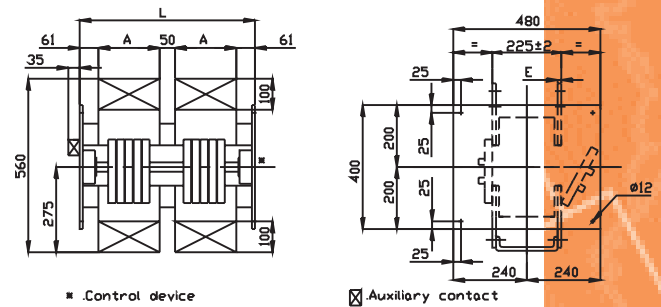


Figure 12



Dimensions mm	Current Rating kA			
	8	10	12	16
A	150	200	250	300
E	15	15	15	15
G	280	280	280	280
H	570	570	570	570
L	872	1072	1272	1472
Driving	Weight kg			
Manual Handle	180	220	260	340
Geared motor	185	225	265	345

Dimensions mm	Current Rating kA		
	4	6	8
A	150	250	300
E	15	15	15
G	280	280	280
H	570	570	570
L	472	672	772
Driving	Weight kg		
Manual Handle	95	135	175
Geared motor	100	140	180